

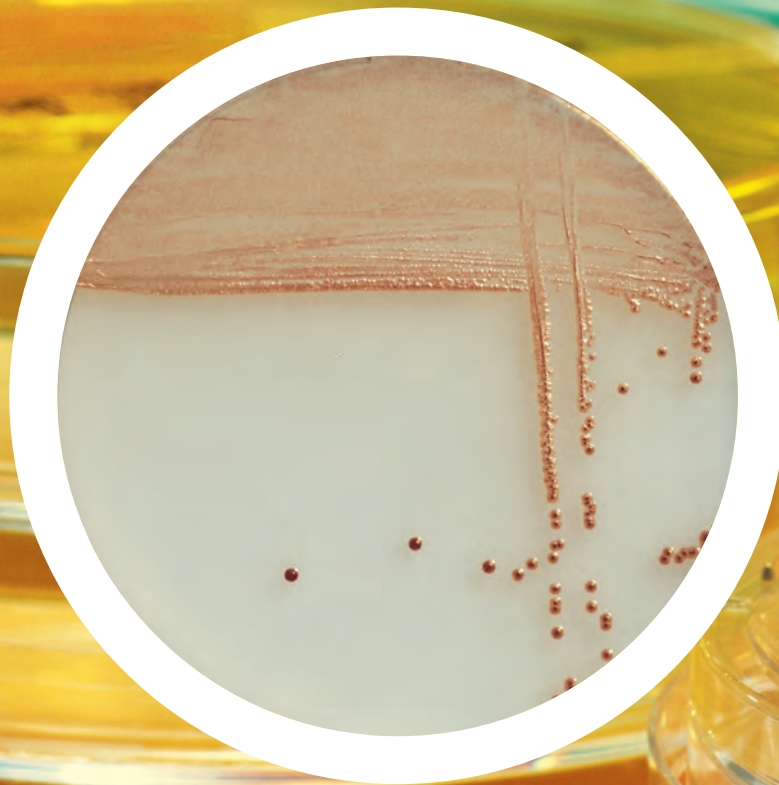


# CAMPYLOBACTER

UNIQUE MEDIA

## Simplicity & performance

DETECTION • ENUMERATION • VALIDATION ISO 16140



PIONEERING DIAGNOSTICS

5477570 18:47  
BIOMÉRIEUX



# VALIDATED, SIMPLE AND EFFECTIVE SOLUTIONS FOR THE ENUMERATION AND DETECTION OF CAMPYLOBACTER

**Campylobacter** is a food pathogen, recognized as the primary bacterial cause of gastroenteritis

Enteric infections are essentially caused by 2 species: *C. jejuni* (85-90%) and *C. coli* (9-14%)

Contamination is usually food-borne: undercooked meat (poultry, mutton and pork), water-borne and environmental

The illness is characterized by fever, which is generally moderate, abdominal pains and diarrhea, sometimes with bloody stools

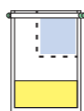
Guillain-Barré syndrome (neurological disease) has a dramatic consequence (less than 1% of cases of *Campylobacter* enteritis) and is limited to *C. jejuni* infections

*Campylobacter* ranks third of the microorganisms responsible for death after *Salmonella* and *Listeria*

## ENUMERATION

### CampyFood®

**Dilution (D0)**  
x g (or x ml) in 9 x ml of CampyFood® broth or BPW



**Inoculation (D0)**  
0.1 ml on CampyFood Agar by spreading



Incubation 44 hrs ± 4 hrs at 41.5°C in a microaerobic atmosphere (GENbox or GENbag microaer)

**Enumeration (D2)**



Characteristic colonies

**Confirmation of Campylobacter genus**

Strict microaerophilic colonies  
Characteristic microscopic examination  
Positive oxidase test



Positive VIDAS CAM test on characteristic colonies

## DETECTION

### CampyFood®

**Enrichment (D0)**  
x g (or x ml) in 9 x ml of CampyFood® broth



Incubation 48 hrs ± 4 hrs at 41.5°C in a microaerobic atmosphere (Combibag + GENbox microaer)

**Isolation (D2)**  
Isolation on CampyFood Agar



Incubation 44 hrs ± 4 hrs at 41.5°C in a microaerobic atmosphere (GENbox or GENbag microaer)

**Reading (D4)**



Characteristic colonies

**Confirmation of Campylobacter genus**

Strict microaerophilic colonies  
Characteristic microscopic examination  
Positive oxidase test



Positive VIDAS CAM test on characteristic colonies

### VIDAS® CAM

**Enrichment (D0)**  
x g (or x ml) in 9 x ml of CampyFood® broth



Incubation for 48 hrs ± 4 hrs at 41.5°C in a microaerobic atmosphere (Combibag + GENbox microaer)

**VIDAS Test (D2)**

Heating 5 minutes



VIDAS CAM Test 70 minutes

**Confirmation of Campylobacter genus (D2)**

Isolation of unheated broth on CampyFood agar (CFA)  
Incubation for 44 hrs ± 4 hrs at 41.5°C in a microaerobic atmosphere (GENbox or GENbag microaer)



Strict microaerophilic conditions  
Characteristic microscopic examination  
Positive oxidase test

### OPTIONAL

#### Species identification

API® Campy / Campy Latex / VITEK® 2 NH / VITEK MS (ISO 16140 and AOAC RI validations)



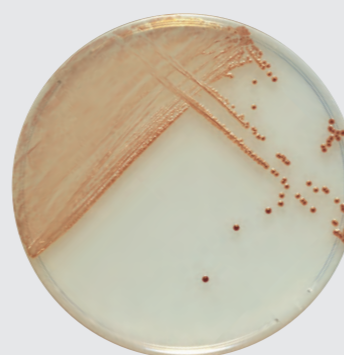
## CAMPYFOOD AGAR (CFA)

### Colored colonies, for easy reading!

Selective isolation and enumeration medium for *Campylobacter* species, particularly *C. jejuni* and *C. coli*.

#### Ease of use

- No resuscitation phase
- Ready-to-use broth



#### AOAC RI and ISO 16140 validated

- for enumeration and detection including fast identification with VITEK MS

#### Easy and quick reading

- Burgundy-red to orange-red colonies on a light beige agar, generally from 24 hrs of incubation under microaerobic conditions at 41.5°C
- Optimal selectivity, synergy with CFB enrichment broth: limited interfering flora

## VIDAS® CAM

### An automated Campylobacter detection solution!

#### Simplicity

- Single enrichment step
- Ready-to-use reagents

#### 48 hrs Results

#### AOAC RI and ISO 16140 validated





## COMBIBAG & MINI-BAGS

### Simple and effective enrichment

#### COMBIBAG

- Combibag is a blender bag with a built-in filter and pouch to add a GENbox microaer: jars no longer necessary
- Standardized, convenient and rapid microaerobic atmosphere

#### READY-TO-USE CAMPYFOOD® BROTH IN MINI- BAGS: NO ADDITION OF BLOOD OR ANTIBIOTIC

- Time saving and convenient due to ready-to-use broth in an innovative container (CampyFood Broth CFB 225 ml)
- Security: unbreakable
- Convenient and economical: non-bulky and light waste, reduces of disposal costs

#### A RANGE OF COMPLEMENTARY PRODUCTS, FOR SIMPLIFIED AND EFFECTIVE PROTOCOLS!

CampyFood agar	43471	20 plates
VIDAS CAM	30111	30 tests
CampyFood broth (CFB)	42643	mini-bags: 10 x 225 ml
Peptone water	AEB911495/2 AEB911493/4 AEB111499 AEB611494	2 x 5 L 3 x 4 L 100 tubes of 9 ml 6 x 90 ml
Buffered peptone water	AEB910303/4 AEB910305/2 42042 42043 42729 42111	4 x 3 L 2 x 5 L 6 x 90 ml 6 x 225 ml mini-bags: 10 x 225 ml 100 x 9 ml
Combibag	30551	30 bags
GENbox microaer	96125	10 pouches
GENbox Jar	96127 96128	2.5 liters 7 liters
GENbag microaer (Petri plate incubation)	45532	20 tests
Oxidase reagent	55635	50 ampules
API® Campy	20800	12 strips + 24 media
VITEK® 2 NH	21346	20 cards
Campylobacter spp Latex	MGNF46	50 tests
VITEK® MS	Consult us	

Please contact us for more detailed information

## BETTER PERFORMANCES THAN EN ISO 10272-1 METHOD

#### CAMPYFOOD AND EN ISO 10272-1 DETECTION METHOD COMPARISON

Results obtained during validation according to EN ISO 16140 reference.

		ISO 10272-1	
		+	-
CFA	+	83 <sup>(1)</sup>	14 <sup>(1)</sup>
	-	2 <sup>(2)</sup>	109 <sup>(3)</sup>

(1) confirmed positives - (2) (3) no positive sample with alternative method, negative after confirmation

#### METHOD SENSITIVITY

	CAMPYFOOD	VIDAS®	REFERENCE METHOD
Confirmation using isolation on CFA	98.0%	98.0%	85.9%

